



Hendricks County Parks & Recreation 5 Year Comprehensive Plan

Hendricks County Indiana
April 6th 2016

Prepared by:



HENDRICKS
COUNTY



PARKS &
RECREATION

This page has been intentionally left blank

CONTENTS

VISION	4
MISSION	4
VALUES	4
INTRODUCTION	5
HENDRICKS COUNTY PARKS & RECREATION	10
ACCESSIBILITY AND UNIVERSAL DESIGN	12
EXISTING FACILITIES	15
AGENCY RESOURCES BENCHMARK COMPARISON	22
PUBLIC PARTICIPATION	23
PRIORITIES	25
ACTION PLAN	26
BOARD RESOLUTION ADOPTING PLAN	29
SECTION 504 COMPLIANCE	30
APPENDIX	31

Acknowledgements

Comprehensive Plan Committee Members

Bob Niemeyer	Brent Lacy
Paul Miner	Jeff Banning
Monica Myers	Facilitated by Mader Design LLC and Superintendent William Roche

Park Board Members

Gary Emsweller	Paul Miner
Matthew Frieje	Dennis Gibbs
Bob Niemeyer	Beth Switzer

County Council Members

Mike Rogers, District 1	Jay Puckett, District 2
Brad Whicker, District 3	Eric Wathen, District 4
Caleb Brown, At Large	Larry Hesson, At Large
Richard Thompson, At Large	

County Commissioners

Bob Gentry	Matthew Whetstone
Phyllis A. Palmer	

VISION

The Hendricks County Parks and Recreation Vision Statement:

“To provide outstanding natural environments for all citizens to enjoy and learn.”

MISSION

The Hendricks County Parks and Recreation Mission Statement:

“To lead in protecting, developing, and connecting natural and historic recreation areas through implementing the highest conservation and environment standards and enhancing quality of life, impacting economic development, and promoting a sustainable future.”

VALUES

The Hendricks County Parks & Recreation Department continually strives to:

- Be a leading entity in parks and recreation management in the County/State/Midwest
- Provide the highest quality facilities and programming
- Promote the highest conservation and environmental standards to the community
- Protect and preserve important natural and cultural resources as park offerings
- Continue to enhance existing park property
- Be transparent and uphold the highest ethical standards in all board and department operations
- Provide the best human resource practices within the industry
- Provide recreation and education opportunities within our parks for all ages and abilities
- Be a benefit to the county in economic development and quality of life
- Be good stewards of the resources entrusted to us
- Build a strong network of parks and trails throughout the county for future generations
- Work for the best interest of the residents of Hendricks County

INTRODUCTION

Location and Planning Area

Hendricks County is located on the western border of Indianapolis. The county covers an area of approximately 408 square miles and is distinctly suburban along the eastern border and rural in the central and western sections of the county.

Hendricks County has experienced substantial growth over the past 25 years. During that time, the population has doubled, from 75,717 in 1990 to a 2014-estimated population of over 156,000.

Eleven incorporated towns exist within the county, five of which provide recreational resources to their local population with varying levels of service.

The county's proximity to Indianapolis/Marion County offers residents a significant number of nearby recreation opportunities. Eagle Creek Park, in particular, abuts the northeast edge of the county, and was previously mentioned as a recreation destination by county residents. Other popular Marion County attractions include the Indianapolis Canal, the Monon Trail, and the Cultural Trail.

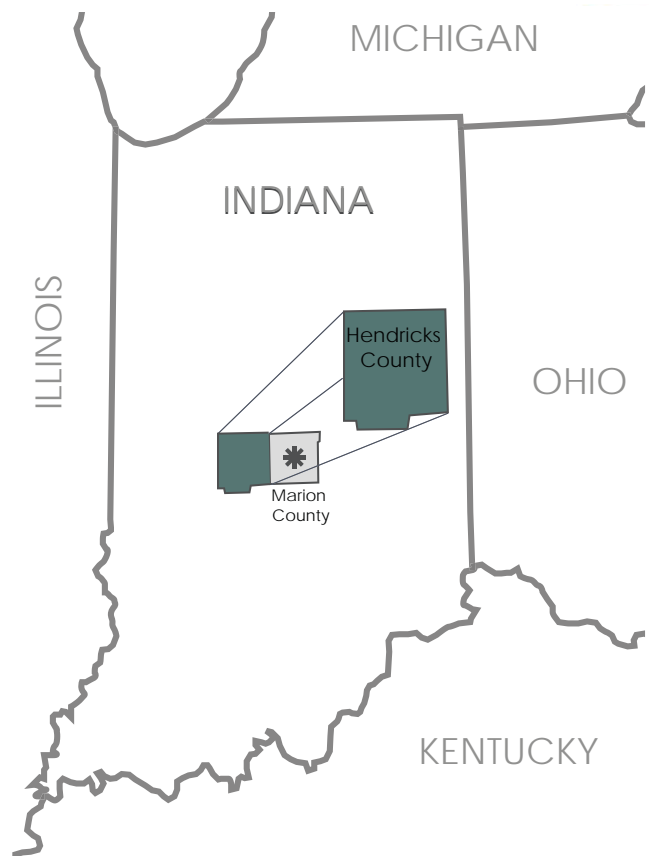
Recreational Amenities

Within the county there are seven public park departments operating within their local jurisdiction, as well as some trail development and advocacy groups. There are also numerous private recreation operators. In the Appendix you will find a complete list of parks and amenities operated by public park departments within the county. HCP&R endeavors to coordinate and complement the local parks with the county parks, trails, amenities, and programs.

Education System

Six public school districts operate within the county, as well as several private schools. Avon, Brownsburg, Mill Creek, Danville, Northwest Hendricks and Plainfield have between them six high schools, one junior high school, seven middle schools, six intermediate schools, 19 elementary schools, one cooperative achievement program, and four Christian schools.

Each school has a comprehensive list of enrichment and extra-curricular opportunities which vary by school, but include: athletics, clubs, arts and performance, and



County Location Map

Source: *Hendricks County Parks And Recreation Master Plan 2011-2015*

recreation facilities. Partnerships between the schools and the county's various parks and recreation programs provide opportunities for shared resources. For example, several schools partner with HCP&R to utilize McCloud Nature Park and Sodalis Nature Park for cross country, track, and running/walking programs.

Man-Made, Cultural, and Historical Resources

There are a number of historical places of interest in Hendricks County, including 18 places listed on the National Register of Historic Places, and an additional five recognized by the Indiana Historical Bureau. While HCP&R does not run or house any of the designated historic places of interest, the department works with the tourism bureau to assist with promotions available and a few of the sites are close to the Vandalia Trail (noted below). History of the county is important to HCP&R both in facilities and programming and will likely play a strong role as the department continues to grow, both site-specific history within existing parks and broader as the department considers parkland acquisition in the future.

Those on the National Register of Historic Places:

- Ora Adams House
- Amo THI&E Interurban Depot
- Leander Campbell House
- Danville Main Street Historic District
- Danville Courthouse Square Historic District
- Dr. Jeremiah & Ann Jane DePew House
- Hendricks County Bridge Number 316
- Hendricks County Jail & Sheriff's Residence- Hendricks County Historical Museum
- Joel Jessop Farm
- Noah & Hannah Hadley Kellum House
- Jessop-Chandler-Kellum Farm
- John W. McClain House
- Bowman-McCormack House
- Smith Farm
- Sugar Grove Meeting House & Cemetery
- Twin Bridges
- Wilson-Courtney House

Those Recognized by Indiana Historical Bureau with Historical Markers:

- Plainfield Western Yearly Meetinghouse
- Danville Carnegie Library



McCloud Nature Center

- Central Normal College
- Samuel Luther Thompson Marker – Danville, Ellis Park
- Arthur L. Trester marker site: Amo (proximate to Vandalia Trail)

Other Historical Sites & Points of Interest in Hendricks County:

- 1883 One Room School – Living History Program, Pittsboro
- Historic National Road - US 40
- Site of Van Buren Elm at the Plainfield Western Yearly Meetinghouse, Plainfield, Main Street (US 40)

Hospitals and Health/Family Services

There are 18 different locations providing a range of health and family services to the local community.

- Hendricks Regional Health- main campus: Danville satellites in Brownsburg, Plainfield, Avon, and Lizton
- IU Health West - east side of county
- St. Francis – satellite facility in Plainfield
- Children's Bureau/Community Partners, Danville
- Day Nursery Early Care and Education Center, Avon
- Healthy Families Hendricks County, Danville
- Dept of Family Resources, Plainfield
- Hendricks County Head Start, Danville
- Hendricks County Health Department, Danville
- Sycamore Services Inc. Children's Services, Danville
- Alzheimer's Support Group Hendricks Regional Health, Danville
- Hendricks County Senior Services, Danville
- Meals on Wheels, Hendricks Regional Health, Danville
- Sheltering Wings, Danville
- Hendricks County Mental Health Association, Avon

Libraries

- Avon-Washington Library
- Brownsburg Public Library
- Clayton Liberty Public Library
- Coatesville Public Library
- Danville Public Library
- Plainfield-Guilford Township Public Library

Museums

The Hendricks County Museum in Danville and several other museums and cultural centers in Indianapolis are available to the community of Hendricks County. HCP&R regularly coordinates with the Hendricks County Museum.



Hendricks County Museum

Source: www.visithendrickscounty.com

Festivals and Special Events

Fairs and special events are located throughout the year at various county locations, some of which are free to attend. Among others, these include.

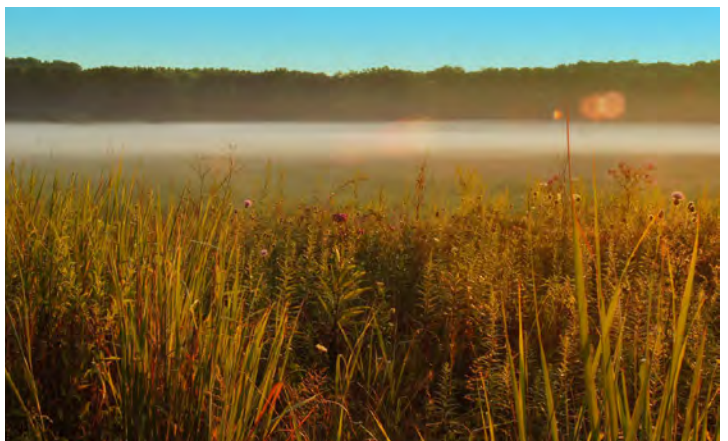
- Easter Egg Hunt
- Brownsburg Annual Pops Festival
- AHS Delta Epsilon Phi Jazz Fest
- Central Indiana Artist Spring Art Show
- Springfest Crafts Festival Plus
- Hendricks Co. Antique Tractor Show

- Amo Fish Fry
- Symphony in the Park
- Summer National Drags
- Arts in the Park
- Hendricks County 4-H Fair
- North Salem Old Fashioned Days
- Fair on the Square
- Plainfield Heritage Quaker Day
- Avon Community Heritage Festival
- Heartland Apple Festival
- Winterland Light Show
- Christmas Under the Stars
- Mid-Winter Pow Wow

Natural Features and Landscape

Hendricks County is located within the Indiana physiographic region known as the Tipton Till Plain. This flat topographic area was created from debris deposited by retreating glaciers of the Wisconsin Age which once covered the region.

There are no bodies of water in Hendricks County of appreciable size. The largest is approximately two dozen acres. There are a number of small streams within the county, and two significant stream corridors: Big Walnut Creek, which runs through McCloud Nature Park, and White Lick Creek and its associated forks, located in the eastern portion of the county. The creeks provide limited water-based recreation opportunities, due to fluctuating water levels throughout the year. The streams are often too shallow for boating or canoeing, although 'creek stomping' at McCloud Nature Park is a popular activity.



The Central Indiana Land Trust (CILTI) has identified a number of areas within the county as valuable to preserve to maintain habitat for sensitive wildlife. These include the riparian corridors of the White Lick Creek and the Big Walnut Creek. According to CILTI, “Most of the remaining forest in Hendricks County is found along a stem of White Lick Creek... A White Lick Creek greenway system could protect important wildlife habitat while offering outdoor recreation as well as help maintain or improve a high quality stream.”

Sodalis and McCloud Parks provide significant tree cover not found readily in the county. McCloud also houses one of the largest prairie restorations in the county. The prairie is regularly maintained by controlled burning. HCP&R is in a unique position to manage significant habitat areas unique within the county.

Sodalis is part of a mitigation area established originally by the Indianapolis International Airport to protect the endangered Indiana Bat. Soon to expand to over 2,000 acres, this protected habitat is critical to the sustainability of the species.

The parks have invasive species issues common throughout Indiana. Emerald Ash Borer is a threat to ash forests throughout the state. HCP&R works steadily to increase tree cover and forested acres through regular tree plantings. Other plant invasives are somewhat present as well, including bush honeysuckle and garlic mustard. Efforts by staff and volunteers are helping to control these species as well.



Lake at Sodalis Park

Climate

Hendricks County has a continental climate characterized by winter temperatures cold enough to support snow cover, with warm temperatures typical of tropical climates in the summer. The county is subject to the various conditions of all four seasons (spring, summer, autumn, winter) and enjoys a mild climate overall. Winter is the most unpredictable season, as precipitation takes on all forms (rain, sleet, freezing rain, snow, and hail).

- Average rainfall per year is 40.3 inches.
- Average snowfall per year is 19.6 inches.
- Average July temperature is 84.7 degrees high/65 degrees low (Fahrenheit)
- Average January temperature is 34 degrees high/18 degrees low (Fahrenheit)
- Lowest recorded temperature -27 degrees Fahrenheit in 1994
- Maximum average precipitation month is July (4.42 inches)

Warmest average temperature month is July and the coldest average temperature month is January (Source: 2009 NOAA – www.nws.noaa.gov). Overall, the climatic patterns support a wide range of recreation activities, although winter snow falls are light and creation of outdoor ice without the use of refrigeration is difficult. Outdoor activities that rely on snow cover, such as sledding or cross country skiing, are generally available on a limited basis.

Soils

The soils in the county fall into seven major associations, the majority of which are poorly drained. The Crosby-Brookston soils comprise the majority of soils in the county, with the Miami-Crosby soils being the next most common. These soil types have some limitations on construction due to their wetness and potential for erosion. These soils are typically poorly drained and have severe to moderate limitations for recreational uses, including campgrounds, picnic areas, play areas, and paths and trails. These limitations are based on the soils' restrictive features such as flooding, wetness, and slope. These limitations may be overcome through appropriate site design, intensive maintenance, limited use of the site, or a combination of measures.

Demographic Information

Since 2010 Hendricks County population has grown from 145,448 to an estimated 156,056 in 2014 - 7.3%. The estimated increase for the state of Indiana was 1.7%. It remains the 10th largest county in Indiana by population and represents 2.24% of Indiana's total population.

In the report Indiana Population Projections 2010 - 2040, the Indiana Business Research Center (IBRC) provided projected Indiana population growth for the state and its counties through the year 2040. According to those projections, Hendricks County population will increase to nearly 200,000 by 2040.

According to the 2013 Census, the population of Hendricks County is predominantly Caucasian (89.8%), with the African-American, Native American, Asian, Latino, and Pacific Islander populations accounting for 8.6% of the total population. This is somewhat less diverse than the state as a whole, which also has a primarily Caucasian population of 85.7%. Between the years 2000 and 2010, the black population in the county grew 511%, likely from growth of the suburbs connecting to Indianapolis, from 1,143 to 6,988, making this population the largest minority group in the county. The Hispanic population is also increasing. As minority populations continue to grow, HCP&R will continue to monitor its programs and offerings to ensure they are meeting needs of all Hendricks County residents.

Hendricks County is a bedroom community to Indianapolis but holds its own with employers. Per the Hendricks County Economic Development Partnership, approximately 1/3 of workers living in Hendricks County work in the county while 2/3 work in other counties. Nearly 50% of jobs in the county are filled by employees from outside the county. Unemployment stands at a very low 3.5% in 2015, down from 7.0% in 2010. The state is at 4.6% in 2015, down from 9.2% in 2010.

Transportation and logistics is a major industry in the county with its proximity to the Indianapolis International Airport. Businesses such as Amazon, Brightpoint, Dicks Sporting Goods, Firestone, O'Reilly Autoparts, JCPenny, and Johnson & Johnson are major employers in that field.

Motorsports is another important industry with companies including John Force Racing, Tony Stewart Racing, Impact Racing Products, and the O'Reilly Raceway Park. The life science industry is another key employer with companies such as Siemens Healthcare Diagnostics, Med Condense, MD Logistics and Biologics Modular.

Other major employers include Hendricks Regional Health and IU Health, ArvinMeritor Engineered Bar Products, Duke Energy, and the local school systems.

The county is among the most affluent in the state with a median income of \$68,297. However, there is still a segment of the population in the low income category and 5.8% in poverty, although the rate has decreased since the financial crisis and recession of 2008. Thus, it is important to consider park programs and events to maintain financial accessibility for all residents.



Hendricks County College & Career Fair
Source: www.visithendrickscounty.com

HENDRICKS COUNTY PARKS & RECREATION

Park Department History

Since its inception in 2000, the Hendricks County Parks and Recreation Board and Department has worked to acquire land, develop infrastructure, pursue protection and preservation of natural lands within the county and provide recreational opportunities to the citizens of Hendricks County and beyond. Highlights of the department's 15-year history include:

- The Hendricks County Parks and Recreation Board was established in March of 2000.
- In 2001, HCPR was awarded a \$756,000 grant from the IDNR Heritage Trust Fund to purchase 232 acres of land for McCloud Nature Park.
- In 2002, the park system received an IDNR Land and Water Conservation Fund grant for McCloud Nature Park. The park was opened in May 2003.
- In 2008, HCPR received a \$665,000 Indiana Department of Transportation National Road Heritage Trail grant to fund land acquisition along the abandoned Vandalia railroad corridor in order to extend the trail within the county.
- The Parks Foundation of Hendricks County was formed in January of 2009.
- In June of 2009, HCPR, the Indianapolis Airport Authority and US Fish and Wildlife Service reached an agreement to create Sodalis Nature Park.
- Acquired 146 acres of land in 2010 in Washington Township, near the center of Hendricks County. This property will be developed as the W.S. Gibbs Memorial Park.
- Installation of the historic bridge in 2009 in McCloud Nature Park providing access to the north section of the park.
- Award of INDOT funds in 2014 for the Vandalia Trail and development of design and engineering drawings.
- An understanding was initiated in 2015 with the IAA to acquire nearly 2,000 acres of mitigation area for expansion of Sodalis Nature Park.

Previous Planning Efforts

The first comprehensive master plan was developed and approved in 2001 after the department was established.

A subsequent plan was completed in 2006. The most recent comprehensive master plan was developed for 2011 – 2015 with a larger view through 2021 and adopted in March of 2011. The primary purpose of the Comprehensive Master Plan was to create a clear set of goals, policies, strategies and actions to provide direction to the Hendricks County Parks and Recreation Board for the development of recreational facilities in the future. While the recommendations in the plan were related to parks and recreation, careful consideration was given to broader county needs and goals including economic development, tourism, quality of life, connectivity, sustainability, health, and the environment.

This 2016 plan is intended to update and build on the 2011 plan, with updates based on public and stakeholder input, and minor changes the department has seen since 2011.

5-Year Master Plan Goals

During the planning process to develop this document, the goal has been to review, evaluate and evolve the Master Plan, engaging the public and stakeholders to inform and update all of the work completed to date. It will continue the momentum that will set the stage for the next 10, 20, or even 50 years while setting a specific action plan of the 2016 - 2021 time period. With this in mind, it is important to consider and plan for future development in an achievable, implementable, practical way while continuing to stretch the department board and staff and position for the future, preparing for ongoing positive growth in how Hendricks County Parks & Recreation serves the community.



Hendricks Regional Health - YMCA
Volunteer Landscaping

Hendricks County Park Board

The Hendricks County Park Board meets the first Wednesday of each month at 2:00 p.m. in the administrative office building located at 955 E. Main St in Danville. However, dates are subject to change. Official Park Board meeting dates and agendas are posted one week prior to the scheduled dates at the main office and the Hendricks County Government Center, located at 355 S. Washington Street in Danville. Members of the public are always welcome to attend.

Board Member:	Office:	Term Ends:
Gary Emsweller	President	January 2017
Beth Switzer	Vice-President	Ex-officio
Dennis Gibbs	Secretary	January 2018
Paul Miner		Ex-officio
Bob Niemeyer		January 2018
Matthew Freije		January 2019
County Council Appointment - Pending		2020

Staff

Full-Time Staff

Superintendent:	Search underway
Park Manager:	Jim Holtsclaw
Park Naturalist:	Sarah Wolf

Part-Time Staff

Assistant Naturalist:	Chelsea McGinnis
Assistant Naturalist:	Jordan Tremper
Maintenance:	Ron Fox
Maintenance:	Lucas McNaab
Maintenance:	Jeff Rosemary
Administrative Asst.:	Linda Brunner
Administrative Asst.:	Meghan Stritar

Volunteers

Since the day Hendricks County Parks and Recreation was formed, volunteers have been imperative to making a meaningful impact on the park visitors. Their enthusiasm, time, and talents are important contributions to the parks and HCP&R will continue to seek them out.

Budget Summary

The Hendricks County Parks and Recreation Department's major source of funding is an annual appropriation from the Hendricks County General Fund (money paid by local taxpayers). The County Council approves a general fund appropriation based upon a HCP&R budget

request, projected tax income, and other county funding obligations.

In 2014 the nationwide average expenditure for park agency operations was \$33.98 per capita for communities matching the county's population distribution. The actual per capita spending for Hendricks County Parks' operating expenses in 2014 was \$2.15. (National Data obtained through the National Park and Recreation 2015 National Database Field Report)

Other Resources

In addition to tax revenue, HCP&R seeks opportunities to offset costs by applying reasonable fees to programs and facility reservations. Due to the few facilities that exist within county parks, these opportunities are admittedly few, however the HCP&R Board remains committed to maximizing revenue capture without creating an unreasonable barrier to participation by residents.

Parks Foundation of Hendricks County

In addition to funding several key events for HCP&R, including Maple Syrup Days and Pancake Breakfast, Native Plant Sale, Park 2 Park Relay, and Fall Colors Run, in 2014 the Parks Foundation named the development of an arboretum at McCloud Nature Park as its first capital project. All funds raised beyond supporting the aforementioned programs are being dedicated towards that \$210,000, with construction anticipated to begin in 2016.

The department is continuously seeking grants to fund various aspects of park development and programming. As future grant opportunities arise the department will assess and pursue them as appropriate.

The department also engages in partnerships and pursues opportunities to partner with other park departments, health departments, nonprofit recreation providers, volunteers, and schools. Each of these help to minimize costs and provide additional resources.

2014 Financial Summary

Operating Expenditures:	\$335,905
Capital Expenditures:	\$240,010
Funds Reverted to Source:	\$83,016
Encumbered for Projects:	\$214,802
Accumulated, Non-reverting:	\$190,640
Total Expenditures:	\$1,064,373
Total Revenue:	\$1,064,373

ACCESSIBILITY AND UNIVERSAL DESIGN

The 2008 American Community Survey (by the U.S. Census Bureau) estimated that 7.5% of the population in Hendricks County has a physical or mental disability.

By age group those with a disability include:

- 1,110 residents or 3.1% of the population under 18
- 4,664 residents or 5.5% of the population ages 18 to 64
- 4,316 residents or 31.1% of the population ages 65 years and older

In order to meet the recreation needs of those county residents and visitors with disabilities, it is the goal of HCP&R to offer barrier-free facilities, programs and services that are inclusive of all users whenever feasible.

The existing surface materials of rustic trails and intended use of many of the park's facilities are restrictive and make meeting ADA requirements a challenge.

The department's Explorer activities magazine cites current accessibility features at each park location and is a vital tool for communicating all developments. The same is true of the website.

Accessibility questions can be directed to the park office at (317) 718-6188.

The Hendricks County Grievance Procedure Under the Americans with Disabilities Act, located in the Appendix of this document, is available at county government buildings.

McCloud Nature Park

McCloud Nature Park currently offers limited accessibility to those with disabilities.

Accessible Parking

All roads and parking lots in the park are surfaced with loose gravel, which does not provide the stable, firm and slip-resistant surface required under the ADA. Two accessible parking spaces have been designated in the parking lot adjacent to the Nature Center. However, as the lot is gravel, no striping or designation of the stall size has been made. The designated accessible parking spaces are located along the shortest route to the main entrance of the Nature Center.

Nature Center

A concrete ramp to the front door of the Nature Center provides access for wheelchairs and the mobility impaired. Inside, many amenities are accessible to those with mobility impairments, including displays and the observation window. Restrooms are provided in the Nature Center and are accessible.

Picnic Shelter

The picnic shelter sits on a concrete pad. However, a gravel edge around the shelter and a gravel path to the shelter inhibit access. Accessible picnic benches were added in the summer of 2010.

Trails

Trails in the park are either crushed stone or compacted earth. When well-compacted, some of the trails are used by those using a wheelchair or walker or those with other limited mobility disabilities. Other trails, because of their loose or unstable surface and/or steep grade, are not readily accessible.

Sodalis Nature Park

Sodalis Nature Park brings additional accessible amenities to the HCP&R system. Accessible amenities in the park include a paved parking lot, marked accessible parking stalls, a picnic shelter with accessible picnic benches, paved accessible trails, restroom facilities and a floating fishing pier. More rugged, unpaved trails with limited accessibility wind through wooded areas.



Accessible Picnic shelter at Sodalis Park

As future property is acquired and developed, buildings and amenities will follow ADA requirements. It is likely that some additional trails will be constructed as universally accessible, while many will be developed as rugged wilderness trails.

W.S. Gibbs Memorial Park

This park is currently undeveloped. As design and construction ensue, it is intended to develop buildings and amenities within ADA guidelines.

Vandalia Trail

Vandalia Trail is currently a rustic trail with gravel and compacted earth surfacing. With the help of INDOT and local funding, design is currently underway and construction is anticipated soon to pave and improve sections of the trail from Amo to Coatesville, and west to the county line to make the trail more stable and accessible.

Programming

It is the department's desire to accommodate those with disabilities in all programming activities. In general, the programs held at the McCloud Nature Park Nature Center or other indoor locations can be adapted to accommodate those with disabilities. The department has successfully done this in the past when an individual with a disability has attended a school or other educational program. As most of McCloud Nature Park's outdoor amenities are not currently accessible, the outdoor programs are, for the most part, not readily adaptable to those with some disabilities. Given the nature of the McCloud Park terrain, it is unlikely that the park will ever be fully accessible. However, measures to add accessible routes to those amenities that could be accessible will open additional programming opportunities at the park.

Finally, the accessible outdoor amenities at Sodalis Nature Park open additional opportunities for programming that is accessible to all, including fishing and nature walks.



Sodalis Park Trail



McCloud Nature Center

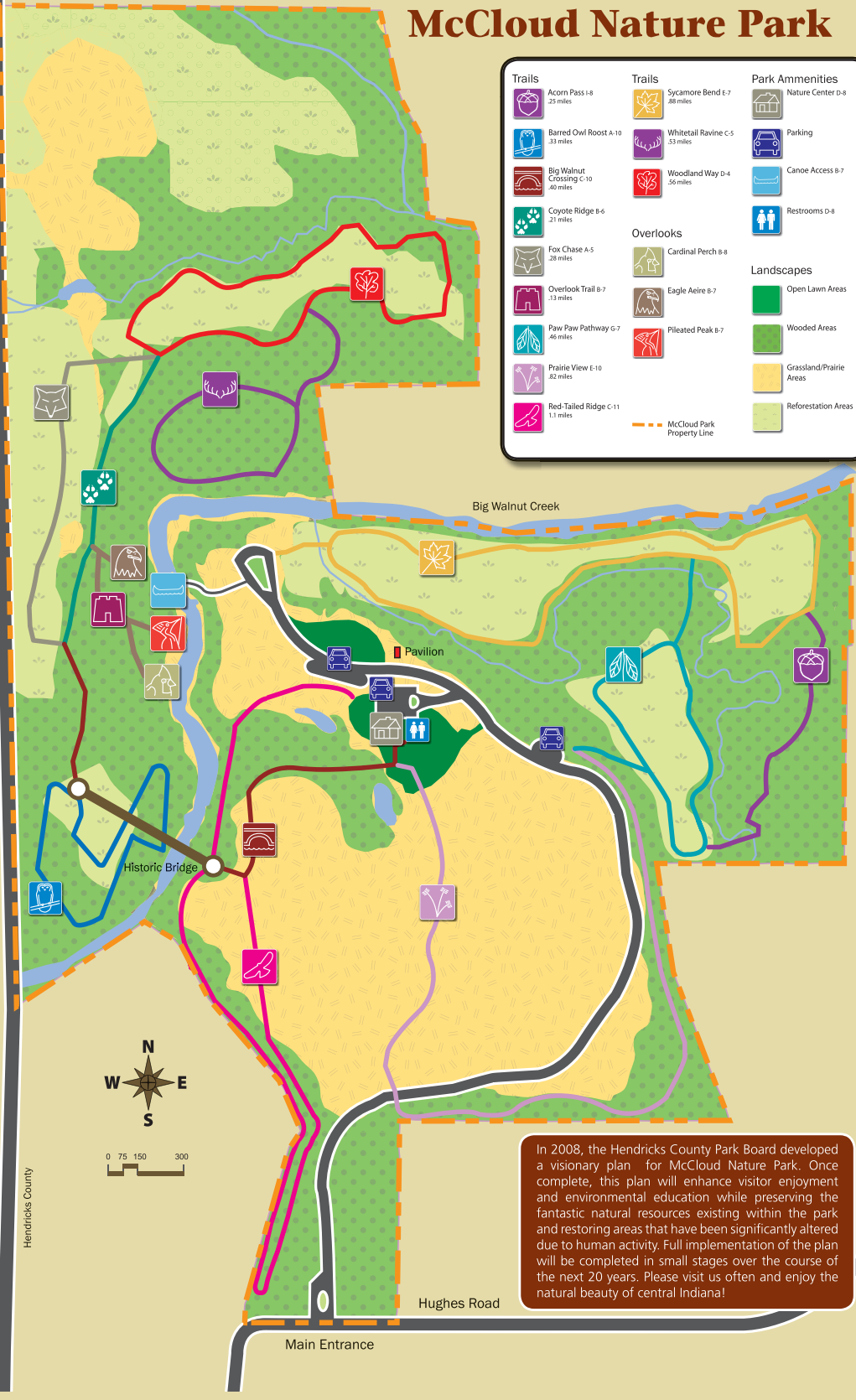


Accessible Fishing Pier at Sodalis Park

McCloud Nature Park

County Line Road | 1900 West
 E. CR 1225 N.
 Putnam County
 Hendricks County

Trails		Trails		Park Amenities	
	Acorn Pass I-8 25 miles		Sycamore Bend E-7 28 miles		Nature Center D-8
	Barred Owl Roost A-10 33 miles		Whitetail Ravine C-5 53 miles		Parking
	Big Walnut Crossing C-10 40 miles		Woodland Way D-4 56 miles		Canoe Access B-7
	Coyote Ridge B-6 21 miles		Overlooks		Restrooms D-8
	Fox Chase A-5 28 miles		Cardinal Perch B-8		Landscapes
	Overlook Trail B-7 13 miles		Eagle Aerie B-7		Open Lawn Areas
	Paw Paw Pathway G-7 46 miles		Pileated Peak B-7		Wooded Areas
	Prairie View E-10 82 miles		McCloud Park Property Line		Grassland/Prairie Areas
	Red-Tailed Ridge C-11 1.1 miles				Reforestation Areas



In 2008, the Hendricks County Park Board developed a visionary plan for McCloud Nature Park. Once complete, this plan will enhance visitor enjoyment and environmental education while preserving the fantastic natural resources existing within the park and restoring areas that have been significantly altered due to human activity. Full implementation of the plan will be completed in small stages over the course of the next 20 years. Please visit us often and enjoy the natural beauty of central Indiana!

EXISTING FACILITIES

PARKS

McCloud Nature Park

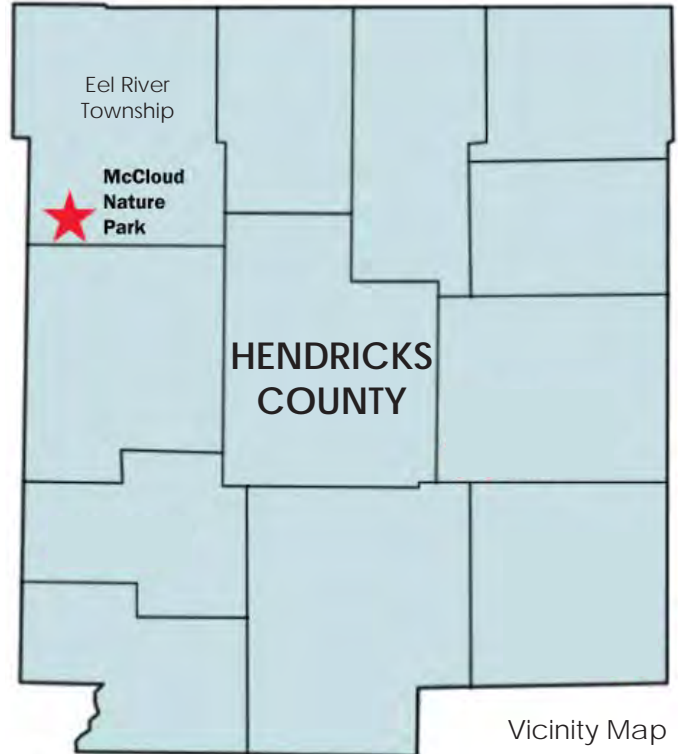
At 232 acres, McCloud Nature Park is a premier nature park in central Indiana. More than 36,000 visitors per year enjoy over six miles of hiking trails, access to Big Walnut Creek, year-round programs at the Nature Center and a wide variety of wildlife viewing opportunities. Modern restrooms and picnic facilities are on-site. A park pavilion is available for group rental.

Park Amenities:

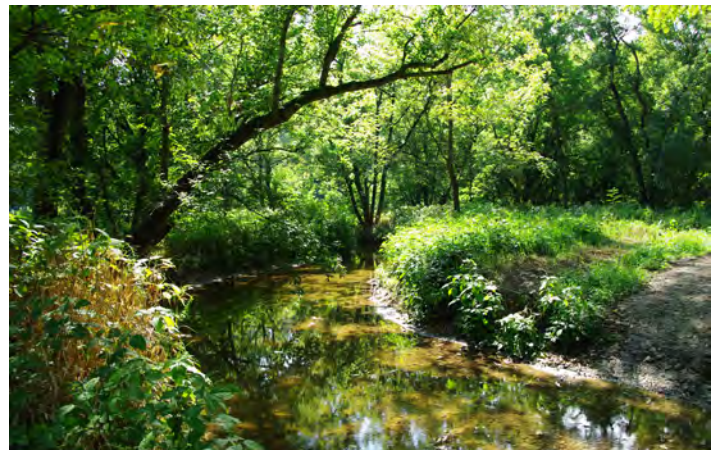
- 232 acres of woods, glacial ravines, prairie and creek
- 6-1/2 miles of well-marked trails
- Fishing and wading in Big Walnut Creek
- Nature Center with restrooms
- Interactive exhibits
- Restored 101-year-old iron truss bridge
- Bird-viewing room and resource library
- Weekly nature programs
- Picnic pavilion with tables

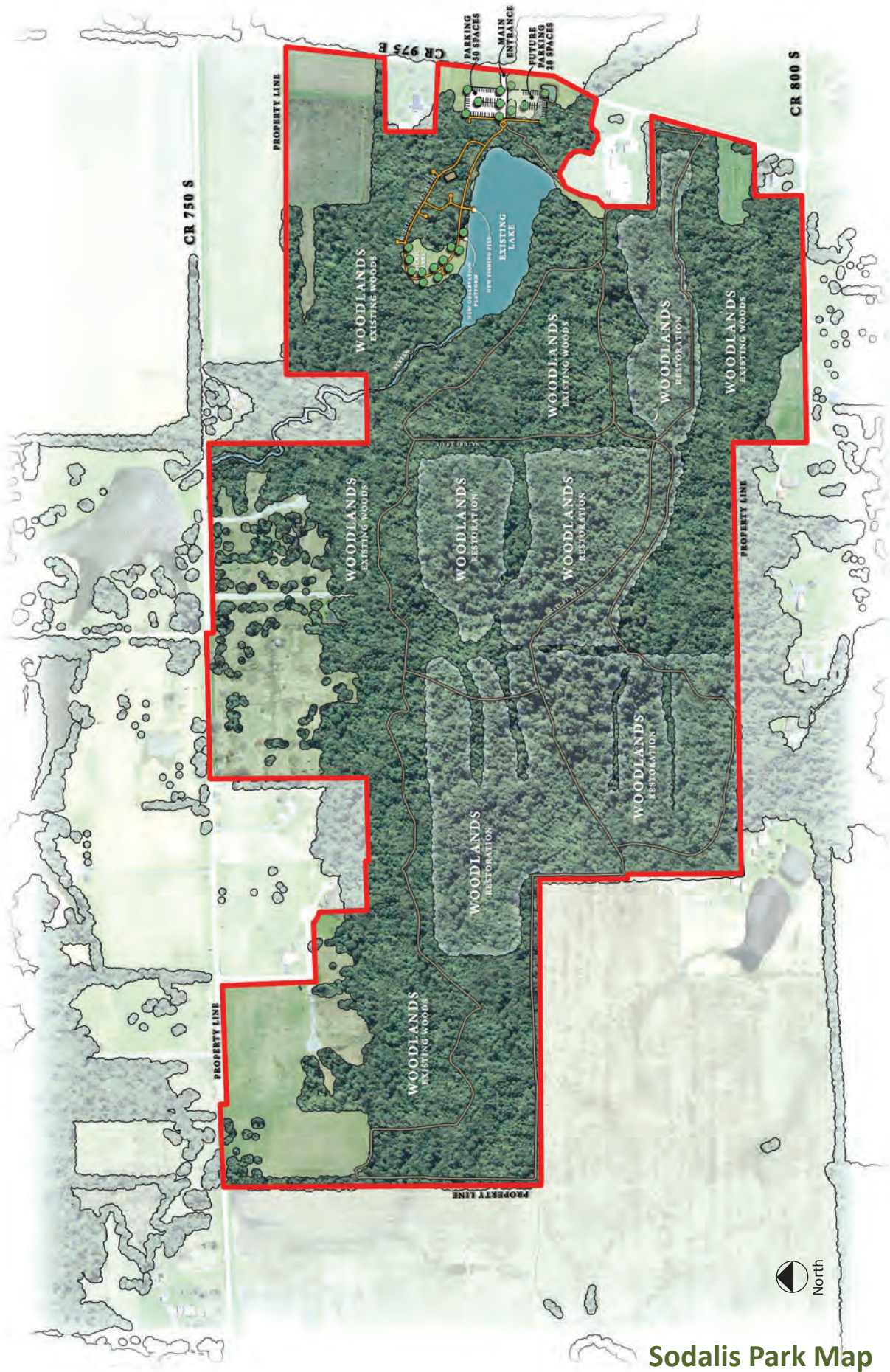
McCloud Nature Center

The McCloud Park Nature Center hosts over 1,000 square feet of exhibit space and is filled with informative modern exhibits, animal specimens, interactive and educational computers, a bird viewing area, greenhouse, resource library and rotating local artists' exhibits.



Source: *Hendricks County Parks And Recreation Master Plan 2011-2015*





Sodalis Park Map

Sodalis Nature Park

Sodalis Nature Park is Hendricks County's newest park with 210 acres of beautiful, mature woodlands and reforestation area, which serve as home to an abundant array of native Indiana wildlife. Over 90,000 visitors per year enjoy fishing in the 5.5-acre pond, hiking over 3.5 miles of nature trails and relaxing in the picnic area. The park exists within a permanently protected conservation area established to protect the endangered Indiana bat (*Myotis sodalis*).

HCP&R is negotiating an agreement with the Indianapolis Airport Authority to acquire 2,000 acres of protected conservation area to create a nature park. The land includes protected wetland areas that provide critical habitat for the endangered Indiana bat, and many other species of animal and plant life. The land also includes Sodalis Nature Park. Additional coordination is ongoing with US Fish & Wildlife, Indiana Department of Natural Resources, and other state and federal agencies with interest in the property.

Park Amenities:

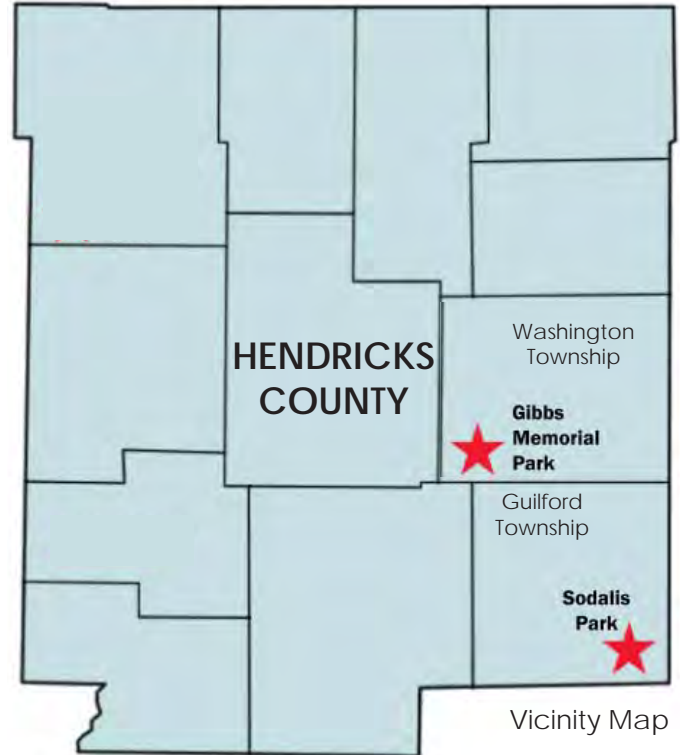
- 3.5 miles of nature trails
- One 24'x44' pavilion
- Nature programs
- Fishing on a 5.5-acre pond
- Wildlife viewing platform
- ADA-accessible fishing pier
- ADA-accessible picnic area

W.S. Gibbs Memorial Park

The master plan for W. S. Gibbs Memorial Park, adopted by the Hendricks County Park Board in 2013, is the culmination of a lengthy community planning process establishing a collective vision for a centerpiece of the Hendricks County Parks system that will serve residents and visitors for generations

The master plan unifies a park designed in harmony with its natural systems, a place that accommodates a wide variety of community events and recreational activities unique to the region, a design that recalls the site's rich

agricultural heritage while looking to its future as a key community recreational asset, and a place that promotes active, healthy lifestyles for all ages.



Source: *Hendricks County Parks And Recreation Master Plan 2011-2015*



Sodalis Nature Park

MASTER PLAN KEY
NOTES:

- 1 Park Center
- 2 Events Lawn
- 3 Trails
- 4 Community Gardens
- 5 Pavilion
- 6 Shelters
- 7 Wetlands
- 8 Reforestation
- 9 Formal Gardens
- 10 Farmstead
- 11 Pond
- 12 Boardwalk
- 13 Prairie Plantings
- 14 Nature Play
- 15 Adult Play
- 16 Water Play
- 17 Adventure and Ropes Course
- 18 Enhanced Stream
- 19 Bike Adventure Course
- 20 Art & Nature Path
- 21 Pasture/Animal Husbandry
- 22 Passive Open Lawn
- 23 Fruit and Nut Orchard
- 24 Disc Golf
- 25 Maintenance Facility
- 26 Celebration Barn
- 27 Traditional Play
- 28 Native Plant Nursery
- 29 Maintenance Facility Alternate
- 30 Future Road
- P Parking (approx. 650 spaces)



W.S. GIBBS MEMORIAL PARK MASTER PLAN | HENDRICKS COUNTY PARKS & RECREATION | RUNDELL ERNSTBERGER ASSOCIATES



TRAILS

Vandalia Trail

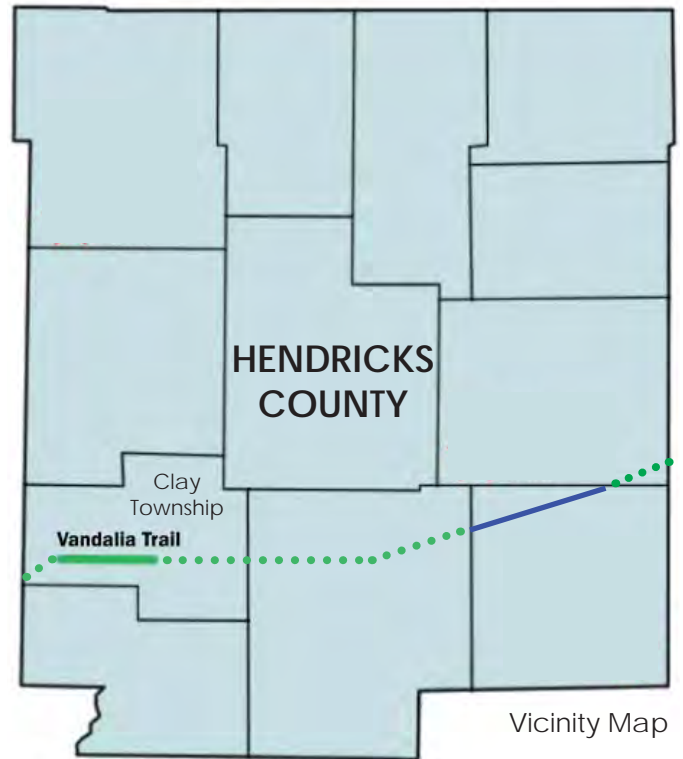
As a carefully planned trail, the former Vandalia Railroad route will provide much-needed recreational and health benefits, spur economic development in communities along the line, and enhance the value of surrounding land.

The Hendricks County Parks & Recreation Department is coordinating development of the trail on behalf of partners that include the towns of Amo, Clayton, Coatesville, and Plainfield, Friends of the Vandalia Trail, the Hendricks County Trail Development Association and the Indiana Department of Transportation.

The Vandalia Trail, also known as the National Road Heritage Trail for the historic road it parallels, is planned to extend across the state of Indiana from Terre Haute to Richmond.

Once complete, the trail's western edge will connect with the People's Pathways trail developed in Putnam County, and its eastern edge will connect in Cartersburg with the planned extension of Plainfield's Vandalia Trail. That means area residents will be able to hike, walk, or bike safely from the east side of Plainfield to Greencastle. Eventually, the trail will be part of a statewide trail network from the Illinois border to the Ohio line.

In February 2014, the Indiana Department of Transportation awarded the Park Board \$1,928,000 for construction of a hard-surface trail and parallel equestrian trail from Amo, west through Coatesville to the western county border. Trailheads will be constructed in Amo and Coatesville.



Legend:
 — Existing Trail HCPR
 — Existing Trail Plainfield
 Proposed Trail

Source: *Hendricks County Parks And Recreation Master Plan 2011-2015*

Hendricks County Trail System

Seven entities are involved in trail development, maintenance and/or management within the county. Of these, three entities have a county-wide focus and are free to pursue trail development in both incorporated and unincorporated areas of the county. These are:

- Hendricks County Parks and Recreation
- B&O Trail Association
- Hendricks County Trail Development Association

The remaining trail providers primarily serve one of the incorporated areas within the county, and focus on providing trails within a single community. They include:

- Town of Avon
- Town of Brownsburg
- Town of Danville
- Town of Plainfield

RECREATION

HCP&R provides programs and activities aimed at a variety of ages, user groups and interests. New, revised and additional programs and recreational activities respond to changing community needs and interests. Most of the programs offered by Hendricks County Parks and Recreation are free to participants.



Family Programs

Family programs engage people of all ages and abilities year-round in a wide variety of environmental education and recreation programs offered at Hendricks County Parks. From Astronomy to Wonderful Water Birds, and myriad topics in between, participants enjoy hikes, demonstrations, history and nature talks, and activities designed to enhance their appreciation of the natural world, and better understand the interaction of animals, humans, and the environment.

Library Programs

Library programs, facilitated by park naturalists at local libraries all around Hendricks County, introduce nature and inspire young children with books based on nature-related themes and fun nature crafts.

Scout Programs

Scout programs provide exciting activities and team building challenges aimed at fulfilling badge requirements and journey sessions for Boy Scouts and Girl Scouts in park programs, as well as overnight camping experiences.

Scouts can also rent a merit badge backpack from the McCloud Nature Center to help fulfill, in one day at the park, requirements for merit badges.

School Programs

School programs are offered both inside and outside the classroom. Field trips provide outstanding outdoor experiential learning opportunities and school outreach programs make nature come alive in the classroom. Both can lead to a lifetime understanding of, and appreciation for, nature and the ecological factors native to central Indiana.

Kids Camps

Kids camps are designed for kids 2-12 years old to allow learning opportunities for our youngest explorers, for preschoolers who are ready to explore more complex relationships in nature, and for adventurous and curious older kids who prefer a hands-on approach to learning. Camps enable kids to have fun experiencing the wonders of the natural world first-hand, as park naturalists work closely with them to advance their knowledge of nature topics offered.



Athletic Programs

Athletic programs, such as HCP&R's annual Summer Fun Run Series and other special events run throughout the year, encourage healthy lifestyles by providing individuals and families an opportunity to enjoy plenty of fun and fresh air while getting and keeping fit together.

The Summer Fun Run is an untimed event, held at different locations of the county. Marked 1-mile and 5K courses are offered. The event is widely popular, attracting residents from throughout the county. Depending upon the location, the event may be held in conjunction with another park system in Hendricks County. The variety of locations introduces participants to recreation amenities throughout the county.

Astronomy Programs

Children and families learn to identify and observe objects in the deep night sky above McCloud Nature Park. One Saturday each month from April to October, expert stargazers from Indiana Astronomical Society (IAS) partner with park naturalists to offer sky seminars providing guidance on identifying stars, nebulas and planets. The programs begin with an indoor information session led by expert sky-watchers 1/2 hour before the sky viewing. IAS experts set up powerful telescopes for all to share.

Kids Nature Day Camps

Kids Summer Nature Day Camps provide a hands-on approach to learning. The park naturalists lead these camps and work closely with kids to advance their knowledge of different topics each week. Kids get their hands dirty and have fun learning about the natural world around them. Day Camps include:

- Bug Camp: Insects and Spiders!
- Flying Mammals: Bats
- Reptiles & Amphibians
- Nature's Ninjas: Camouflage
- Making Tracks
- Raptors Rule!
- Crazy Creek Stomp



AGENCY RESOURCES BENCHMARK COMPARISON

Benchmarking with similar departments across the country was completed for the last master plan, and has been updated with current data as a reference here.

AGENCY RESOURCES BENCHMARK COMPARISONS								
Item	St Joseph County, IN	Iredell County, NC	Lake County, IN	Hamilton County, IN	Darke County, OH	Average	Median	Hendricks County, IN
Full time Employees	25	9	68	15	7	24.8	15	3
Full time Employees/1,000 Residents		0.05	0.068	0.05	0.13	0.0596	0.059	0.019
Part time Employees	10 - 20	288	80	50 (approx.)	0	86	80	8
Government Fund Appropriation	\$1,776.13	\$1,136,433	\$6,512,946	\$3,461,734	\$508,000	\$2,324,178	\$1,136,433	\$403,964
% of Government Budget	0.0292%	0.61%	6.00%	4.00%	0.00%	2.13%	0.61%	0.01%
Expenditure per person for Parks & Recreation		\$6.82	\$7.62	\$11.43	\$9.23	\$7.02	\$8.43	\$2.59
Total Revenues from Fees & Charges	\$305,155	\$355,764	\$1,700,000	\$252,830	<2%	\$522,750	\$330,460	\$30,105
Annual Program Participation	38,377	9,267	75,000	56,015	> 20,000	39,731	47,196	12,000
Annual Park Visitation	332,536	105,000	700,000		> 75,000	242,507	332,536	130,000
Total Park Acres of your Department	1,452	217.8	6,800	1,550	1,000	2,204	1,452	442
Total Park Acres/1,000 (your Department)		2.46	6.8	5.13	18.18	6.514	5.965	2.83
# of local park systems in within your service area		3	20	9	33	13	14.5	7
Total Acres of Local Park systems (all)		617.8	20,500	3,356.87		4,894.93	3,356.87	1,618.00
Population (current)	266,709	166,675	496,005	302,623	55,000	257,402	266,709	156,056
Population Growth	-0.10%	4.5%	4.0%		0.0%	1.7%	2.0%	7.3%
Total Land Area of your county (square miles)	457.85	575.6	497	397.9	603	506.27	497	409
Total Land Area/1,000 people		3.45	320	1.3	<0.01 SM	65	3.45	2.62
Number of Parks	9	4	12	13	12	10	12	2
Total Hard Surface Trail Miles	1	0	14.25	17.5	11	8.75	11	24.5
Hard Surface Trail Miles/10,000 people			0.001425	0.57	0.909	0.296085	0.57	1.57
Camping Opportunities	0	1	1	1	0	0.6	1	0
Festivals/Events sponsored by Agency	20	2	5	8 *	4 large, >100 small	8	5	2

* Cool Creek Concert Series; Potter's Bridge Fall Festival; May Migratory Bird Count; Audobon Christmas Bird Count; Holiday Happenings; Jukebox Saturday Car Show; Haunted Trails

PUBLIC PARTICIPATION

Community Survey

Between October 1 and November 3, 2015, a community survey was available via the Department's website, via Survey Monkey, online and as hard copies distributed at the Administrative Office, local libraries, and Parks. The survey was advertised through social media, email blasts to the Department's database, the website itself, in the Explorer publication, and in local newspapers. The survey was open to the public, but is not to be considered a randomized or statistically accurate survey, as significant expense was put into detailed randomized and non-randomized surveys for the 2011 Comprehensive Master Plan. As noted in that plan, the survey results showed strong correlation between the randomized and non-randomized survey, and it was determined that a non-randomized survey would be sufficient for the current update.

The Department received 109 responses online. No paper responses were received. It included 26 detailed questions about the Parks Department, facilities, parks, trails, programs, and community parks and recreation needs, formatted in multiple choice, ranking, and open-ended style questions. An additional seven optional questions requested demographic information.

The information received was consistent with past surveys and identified needs and goals of the Department. Most ranked the parks, facilities, and programs as 'Very Good' or 'Good' in quality, condition, and value. Some specific items to note:

- Most people visit county parks with children or other family.
- Hiking/walking/running, nature watching, and attending programs were the highest activities reported along with relaxing and playing.
- For future development, dog park, accessible equipment, camping, trails linking communities, and nature and paved trails received the highest priority among respondents.
- The Southwest, West, and North portions of the county were identified most prominently as being underserved areas.
- Lack of time and distance to the county parks were the primary reasons that limit use of the parks and programs.
- All of the program categories were represented well in the survey by attendees, and most received over 75% positive or 'great' responses

relative to quality, and nearly all were ranked very highly as being 'fun' and 'educational'. All but one program group were ranked by over 90% as being worth the price, and the other was at 85%.

- A wide variety of program types were offered as suggestions for future programs.
- A wide variety of marketing materials were listed as being important for learning about programs and activities. Most prominent were The Explorer program guide, notices in the local papers, word of mouth, the website, and social media.
- All funding types were ranked fairly highly as sources to pay for new amenities. Surprisingly, over 20% responded positively to new taxes and municipal bonds, and over 45% supported an expanded park budget. As expected, donations and grants ranked highest.
- Over 50% of respondents were not aware of the Parks Foundation.
- When considering future development, a good portion of support was expressed for trails and greenways throughout the county, as well as maintenance and development within existing parks, and the development of W.S. Gibbs Memorial Park.

Stakeholder Meetings

Sixteen separate stakeholder meetings with over 55 attendees were held with a variety of HCP&R partners, volunteers, constituents, and community leaders. The number of attendees does not include the facilitator who attended all meetings, the Park Superintendent, who attended most meetings, or board members who attended several special interest meetings. A meeting with members of the Park Board was held on September 2, while meetings with other stakeholder groups were held over the course of two days on September 8 and 10. Additional meetings were held on September 21 and October 8 with the Parks Foundation members and County Council members. Each meeting was scheduled for approximately 1 hour, and many discussions took the meetings beyond the allotted time.

The participants on these two days generally met in groups with similar/like-minded individuals, although scheduling required some mixing of groups. As examples, most school corporations within the county had representatives attend. Most school leaders fit into one group, although a few

attended separately with other groups. Park administrative staff attended one meeting, and park naturalists and maintenance staff attended a meeting together. Other groups consisted of church representatives, volunteers, staff from other county departments, representatives from other park departments within the county, leaders from towns within the county, and members representing visitors/tourism/economic development groups within the county. County commissioners and county councilors each had their own meeting with nearly all in attendance.

Meetings were facilitated by asking open-ended questions and allowing the group to respond and discuss at relative length. General questions involved impressions of the park system as a whole, facilities, programs, community support, opportunities for partnerships, connectivity and trails, interconnection with other park departments within the county, and focus of the department. Participants were asked to focus on HCP&R's parks specifically with general comments on how they fit in with the local and town park systems within the county. Some more specific topics were asked when pertinent to the specific group in the meeting, such as county officials, park board, schools, and staff. For clarity's sake, meeting notes have been compiled and generalized and can be found in the Appendix.

Some of the most notable and frequent comments include:

- Nearly all stakeholders were very complimentary of the Parks Department's parks, facilities, programs, staff, leadership, and board.
- Most recognized the success the department has had with limited budgets and especially at such a young age compared with most park departments throughout the state.
- Many in the county are recognizing and focusing on the quality of life needs for attracting and keeping residents and businesses, and the impacts that parks have.
- HCP&R complements and works well with the local departments and municipalities within its boundaries with a strong focus on nature, passive recreation, and education rather than athletics and active recreation.
- Many commented on the ability to unplug and re-engage with nature through the county parks, but some indicated that the incorporation of playgrounds that could blend with the park themes and be somewhat separate from the quiet nature spaces may be beneficial as many rural areas within the county don't have access to public playgrounds, and it could provide a different amenity that could attract more and longer park visits.
- Some identified barriers to park use included transportation, financial, and language barriers.
- Many like-minded groups saw opportunities to deepen and expand partnerships, including local faith-based groups, YMCA, scouts, health care providers, and schools.
- Identified needs included a nature center at Sodalis, development and public access for W.S. Gibbs Memorial Park, further development and connections for the Vandalia Trail including connections to Plainfield, connectivity throughout the county and to adjacent counties, assistance to the B&O Trail group, camping, and off-leash dog park areas.
- Future efforts should be balanced with available resources. W.S. Gibbs should have a high priority for development, as should acquiring future property, trail connectivity, and additional development at existing parks. No future efforts should impact the necessary ongoing maintenance of the existing parks to keep them as high-level amenities for the county.
- Programs are good and well run. Continuing to explore marketing and visibility is important, and the department should continuously 'brag' and promote itself and its accomplishments.
- School representatives indicated that planning for field trips, curriculum reviews, and in-school naturalist presentations should begin discussions in late winter or early spring of the preceding school year.
- Many felt the department receives good support from the community, but lack unified support from elected officials. Many of the elected officials agreed, and indicated that parks are important, but other priorities such as infrastructure and public safety often trump parks.
- Elected officials indicated good relationships being fostered with the director and some board members. However, additional engagement with more board members may be beneficial in making the case for the department.
- Big ideas included going big with a regional/

signature park/facility as a tourism destination for the Midwest. It should be focused on nature and passive outdoor recreation, and could include ideas like a retreat/convention/nature center.

- “We are Nature!”
- Balance is important to maintain world-class facilities even while growing.
- Staff worked in close collaboration and showed great respect for each other and a common cause to benefit the community. One concern was the hourly cap for most employees, which can limit the ability for them to truly engage, feel prepared and balanced in their jobs.
- The board is active, productive, and engaged in their work together, and attribute a lot to the leadership of the director. They would like to operate in a more strategic versus tactical way.

Community Group Meetings

The first public meeting was held on October 13 at 6:30 pm at the Hendricks County 4-H Fairgrounds. It was advertised in the local newspapers, on the Department’s website, and through social media and email blasts. Four people attended, including the park director, board president, a resident, and the facilitator. While not the number of attendees desired, the group did have a good, in-depth discussion about each of the parks, facilities, and future of the department. The group discussed a balanced prioritization of park development and acquiring/land-banking property for future parks. The department should balance funding with growth and strive to maintain high quality parks, facilities, and programs, and not sacrifice quality for growth. But, the county cannot increase in size, and the population growth will continue, so it is important to be able to try to acquire property while it is still available and affordable. The discussion moved toward engaging people, especially kids, in nature, and the department should continue its focus on providing nature-based recreation and education.

Other meetings, including stakeholder meetings with the county council and county commissioners, were open public meetings, and appropriately advertised as required. Other than Park Board members, no one from the general public attended these meetings.

A final public meeting to present the completed plan is anticipated in February 2016. It will be advertised in local newspapers, on the website, and via social media and email blasts.

Final Public Meeting

The final meeting was held March 1, 2016, at the Hendricks County Government Center. It was advertised on line, in multiple local papers, and through emails to the parks master list and the stakeholder list. Thirty-two attendees, not including facilitators, showed up. The final draft of the plan was presented, focusing on the purpose of the plan, substantive sections of the plan, and the proposed Action Plan. Several questions were asked about funding, taxes, and capacity to make significant park improvements, as well as park and trail connectivity. There was excitement about the growth of Sodalis Park and the opportunities for growth within existing park property. The presentation was very well received.

NEEDS ANALYSIS

We have analyzed this information after reviewing existing programs and facilities, public survey, public input, stakeholder input, and committee and park board input. Along with considerations for national standards, neighboring and overlapping park departments, we have identified common themes relating to the core elements of the park department.

As a still “young” department growing in its parks and program offering we found four areas with needs:

- Parks and Trails
- Property
- Programs
- People & Policy

Each area has been distilled into specific actions to address specific needs for improvements of the department. The following Action Plan identifies the needed actions, priorities, time line, budget, and potential funding source. This shall be used as a guide for the department for improving operations and developing amenities for this plan’s time frame.

PRIORITIES

In keeping with the department’s vision and mission, the Action Plan assigns a priority of 1 through 3 for each of the items listed, indicating importance to the community, stakeholders, staff, and board. Funding and opportunity will be key in how much of the Action Plan can be accomplished.

The Action Plan is intentionally a stretch goal for the Department, providing a guide for operation and development for the next 5 years.

ACTION PLAN

Action Plan - Hendricks County Parks

	Priority	Timeline			Potential Cost	Potential Funding Source
		2016-2017	2018-2019	2020-2021		
Parks & Trails						
McCloud						
Ongoing reforestation efforts at front entrance	2 to 3	x	x	x	\$5k-\$50k Impacted by notes	I, D
Construct wetlands on south end	1	x			\$250k	M, D
Construct Arboretum, add plantings	1	x			\$110 - \$150k	F, D
Continue development of north side of park, including pavilions/gathering spaces	2		x		\$40k- \$100k	F, D
Continue ADA improvements, including pave trail to bridge, improve accessibility to Nature Center, provide additional accessible features	1	x	x	x	\$50k - 150k	B, D
Add nature play/playground area	3		x		\$50k- \$150k	D, G, F
Consider Public Art installations	3		x			F, I, D
Park Road	2	x	x		\$325k - \$850k	D, G
Sodalis						
Complete Property Acquisition with Airport and other related agencies, approximately 2,000 acres: OPERATIONS BUDGET	1	x			10k	P, B
Develop park development plan to maximize offerings within constraints of area	1	x			\$35k	B, P, I
Development of passive recreation offerings throughout new park area	1	x	x		\$150k - \$300k	D, F, G, M
Development of park support resources	1		x	x	\$200k - \$550k	D, F, G, M
Implement land management plan to begin restoring environmental quality to area	2		x	x	\$50k - \$100k	B, G, P
Seek location for the development of an environmental education center	2		x	x	\$10k-\$20k	I, B
Plan and develop environmental education center: OPERATIONS BUDGET	2		x	x	\$2.5m- \$4.5m	G, D, F, P
W.S. Gibbs						
Begin implementation of Phase I, or redefined elements that will open the park to the public	1			x	\$2.5M - \$5.5M	G, D, F
Develop centralized maintenance hub/service area for equipment, storage, etc. to provide a central point of service for all parks and facilities	3			x	\$150k- \$500k	D, B
Vandalia Trail						
Complete INDOT project for planning and implementation of trail improvements linking Amo with the west county line with an improved trail	1	x			\$2.0M-\$2.5M	G, D, F
Focus on opportunities to connect with Plainfield's trail extension, develop acquisition strategy	2		x		\$10K-\$25K	B, G
Strategic property acquisition in preparation for Phase II trail development	2		x		\$100K-\$200K	B, D, G
Phase II Trail Development	3			x	\$1.8M-\$3.1M	B, D, G, F

	Priority	Timeline			Potential Cost	Potential Funding Source
		2016-2017	2018-2019	2020-2021		
Property						
Acquisition						
Develop a focused property acquisition plan considering areas of need, land value, and future development opportunities	1	x			\$500 - \$2,000	I
Seek out and acquire any properties that meet the highest need for the community, as determined by the land acquisition plan to be developed	3		x	x		D, F
Trail Connections						
Define role in trail connectivity throughout County. Engage County officials and County Planning overlay.	2	x				I
Develop plan to engage in trail connections per defined role developed in action item above.	2	x				I
Programs						
Marketing & Publicity						
Develop annual marketing plan to include parks, programs, and impacts of department upon community	1	x	x	x	\$1k-\$3k	I
Create an intentional focus on engagement and planning with partner organizations such as YMCA, Healthcare, Faith Groups, Scouts and others	1	x	x	x	\$500 - \$1k	I, B
Develop community relations plan	1	x	x	x	\$1k-\$3k	I, B
Program Format Update						
Continue evolution program templates, including evaluations, staff after-action reports, and creating electronic databses of program plans and related material for easy access and future use.	1	x	x	x	\$1k-\$3k	I
Programs						
Develop, and annually review, a comprehensive recreation programming plan	1	x	x		\$1k-\$3k	I, B
People & Policy						
Staff maintenance & retention						
Develop Staff transition plans for key leadership and full time positions including staff training and continuing education	1	x			\$500-\$1k	I
Develop a Service Gap Analysis and Development Chart	1	x	x	x	\$1k-\$3k	B
Lead efforts to formalize county wide park group with local departments	2	x			\$1k-\$5k	I, B
Develop employee orientation program, inclusive of training schedule and development program based on positions.	1	x	x		\$1k-\$3k	I, B
Develop Volunteer Program	1	x	x	x	\$1k-\$3k	I, B, F
Board						
Develop strategy for regular Board Member engagement with elected officials	1	x	x	x	\$1k-\$3k	I
Engage Board with board members from similar county park departments to discuss maturation and evolution of the board and department	2	x			\$1k-\$3k	I

	Priority	Timeline			Potential Cost	Potential Funding Source
		2016-2017	2018-2019	2020-2021		
Policy/Operations						
Establish a Naming Rights Policy	1		x		\$500-\$1k	I
Further engage Park Foundation in planning and operations	1	x				I
Review staffing requirements and current policies to find consistency and formalize Park Board's objectives and desired level of service for the community	2	x			\$500-\$1k	I
Explore balance of accessibility for park users and natural park environment to develop a policy for future park development related to ADA outdoor recreation guidelines, Difficult to maintain complete accessibility given terrain, conservation easements, and requirements within the Department's parks	1	x			\$1k-\$3k	I
Develop and annually evaluate a comprehensive revenue policy and strategy to help maximize the services provided by HCP&RB while maintaining a level of service to all socioeconomic levels	1	x	x	x	\$1k-\$3k	I, B
Formalize and organize policies, rules, regulations, and procedures into an easy to access operations manual	1	x	x	x	\$2k-\$4k	I, B
Develop maintenance and operations standards for key elements of all facilities.	2	x	x	x	\$2k-\$4k	I, B
Develop a natural resources management plan and procedures for all facilities	1	x	x	x	\$2k-\$4k	I, B
Develop and implement a systematic evaluation process for programs, parks and resources. Review outputs at regular intervals and review evaluation process within strategic areas annually	1	x	x	x	\$1k-\$3K	I, B
Funding Key						
A	Alternative Funding Source					
B	Operating Budget					
D	Acquisition/Development Fund Budget					
F	Foundation					
G	Grants - Federal or State					
I	In-House work (consider staff hours)					
M	Mitigation Funding					
P	Partnership					

BOARD RESOLUTION ADOPTING PLAN

WHEREAS, the Hendricks County Parks and Recreation Board is aware of the parks and recreation needs of the residents of Hendricks County, Indiana, and

WHEREAS, the Board realizes the importance of sound planning in order to meet the needs of its citizens,

NOW, THEREFORE, BE IT RESOLVED THAT THE HENDRICKS COUNTY PARKS AND RECREATION BOARD, by unanimous declaration, does adopt the Hendricks County five-year Comprehensive Park and Recreation Master Plan as its official plan for the next five years, for the growth and development of parks and recreational opportunities in Hendricks County.

Passed and signed this *6* th day of *April*, 2016.

ATTEST:

SIGNING AS
Superintendent

Larry P. Cassell
President

Board Member

Robert P. Weinger
Board Member

Board Member

Paul Morris
Board Member

Board Member

Matthew J. Fry
Board Member

SECTION 504 COMPLIANCE

ASSURANCE OF COMPLIANCE

SECTION 504

OF THE REHABILITATION ACT OF 1973

The Hendricks County Parks and Recreation Board (Applicant) has received and read the guidelines for compliance with Section 504 of the Rehabilitation Act of 1973 issued by the United States Department of the Interior and will comply with these guidelines and the ACT.

SIGNATURE

APPLICANT GOVERNOR



(Governor's printed name)

Cary T. Emsweller

SIGNATURE



APPLICANT BOARD REPRESENTATIVE

Dennis Gibbs

(Board Representative's printed name)

DATE 4 / 6 , 2016